



# o'Connell

PROPERTY AGENTS



A GUIDE TO SELLING WITH US



# About Us

Welcome to  
**O'Connell Property Agents**

We're your trusted family-run estate agent.

We first opened our doors in 2007. Ever since, we've used our  
**50 years** of collective experience  
in the Gloucestershire housing market to offer an  
award-winning, personal service for all your property needs.

Our passions are Property & People.

With our professional marketing and transparent approach to communication, we'll do our  
very best to help your home achieve its potential.





# We put people first

Without people you can't make a sale & a house would never become a **home**, if nobody was to live in it.

So, we make sure that there's always someone to talk to and unlike other agents, we won't charge for marketing or make you pay any upfront costs.

We work on a **no sale, no fee basis** so you know we want what's best for you and your property.

## Our two passions are People & Property



# Maximum exposure marketing

We use superior marketing techniques as standard to ensure your property stands out from the crowd. With your home benefitting from increased exposure, you can find the right buyer at the best price quickly:

✓ Premium listings on the major property portals Rightmove, Zoopla, PrimeLocation and OnTheMarket, alongside our own website

✓ Professional photography and detailed floor plans as standard

✓ Pre-launch strategy and social media marketing on Facebook, Instagram, Tiktok and Youtube to attract passive buyers

✓ Full A4 coloured brochures and drone imagery available

*Our properties achieve 97.9% of their asking price on average.*

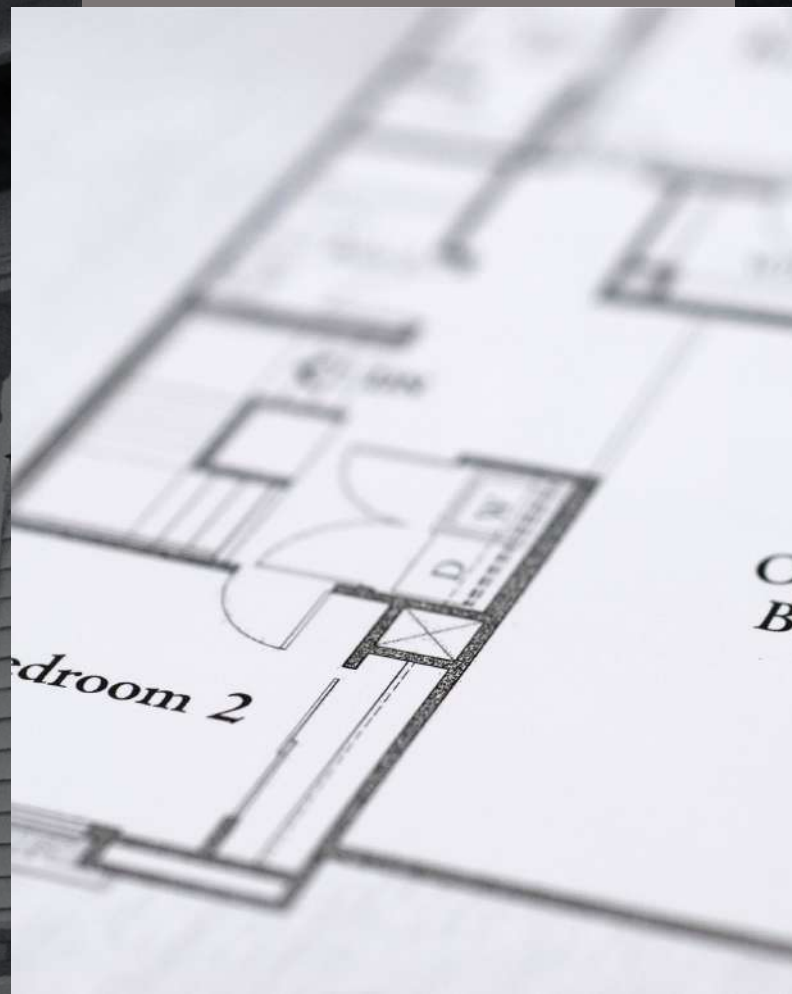


# How We Market Your Home

LARGE BROCHURES



PROFESSIONAL  
FLOORPLANS



PROFESSIONAL  
PHOTOGRAPHY





# Plus.....

VIDEO MARKETING  
(ASK FOR A SAMPLE)



SOCIAL MEDIA  
MARKETING



ALL FOUR MAJOR  
PROPERTY SITES

rightmove 

 OnTheMarket

Zoopla

 PrimeLocation.com



# Your Personal Property Agent

We know that every property is different. So, we look at what works best for you and your home, offering personalised services that are tailored to your situation.

## Virtual video tours

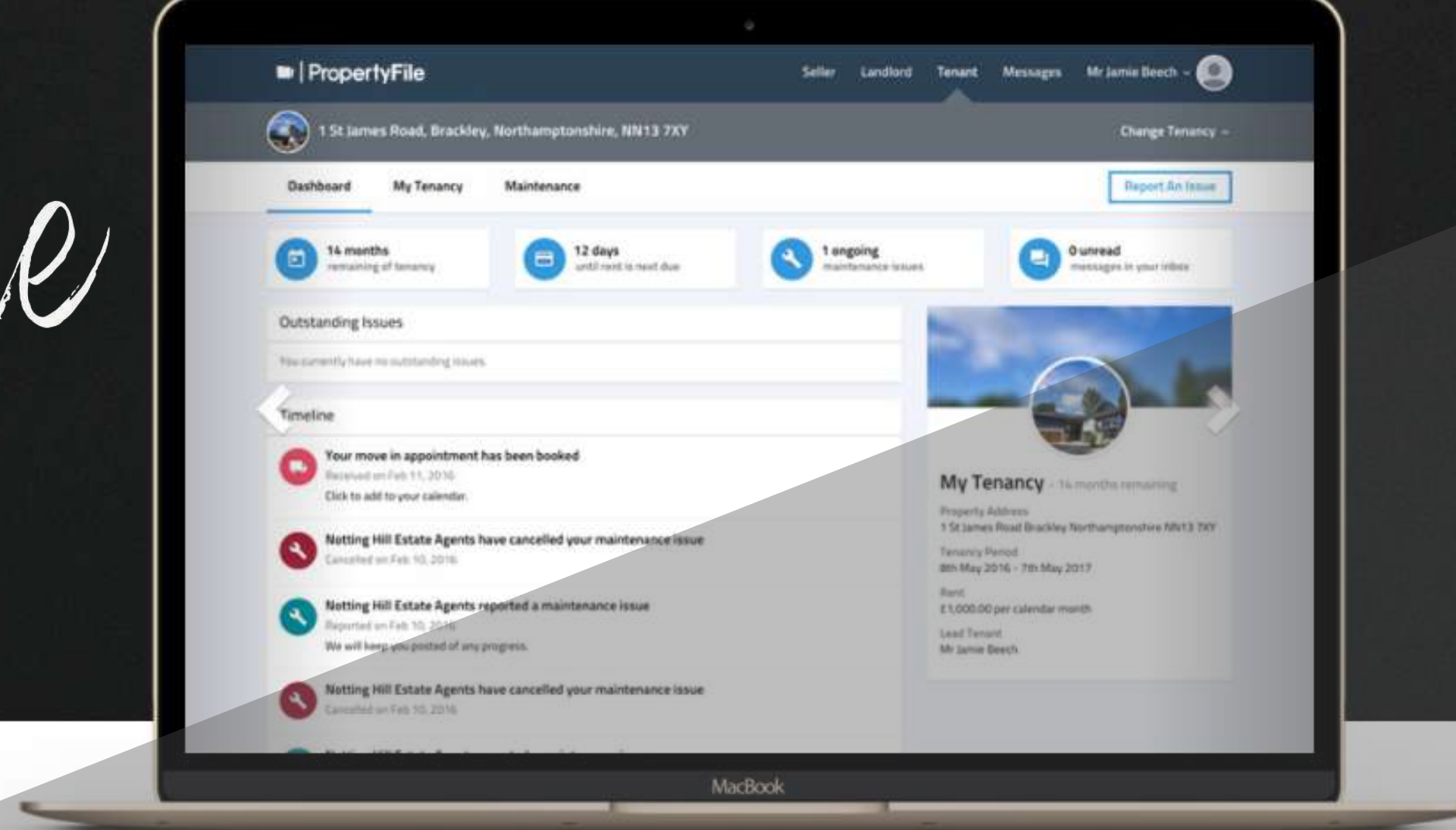
We understand that viewings can disrupt your day-to-day life.

We offer appealing video walkthroughs that give an accurate presentation of your home's best features.

With buyers able to see your home from anywhere, only the most interested home seekers will come to view.



# PropertyFile



Seller's 'PropertyFile' log-in area of our software where you will be able to see important documents and information about your property whenever you choose to save you time.

You will also be able to see viewings, viewing feedback, offers, sales and the progress of your sale



*How we can make a difference!*

BEFORE



AFTER





# CHECK OUT OUR REVIEWS

Please compare our  
Google reviews  
to other agents  
in your area.

We want you to leave  
the next



review.



# Meet The Team

Meet our friendly, multi-disciplined team of property experts. We really take the time to know all of our properties and you'll have a personal agent who will look after your sale from valuation to completion.



ROY O'CONNELL

Director



FAYE O'CONNELL

Director



HONEY O'CONNELL

Property Hound



ADAM ATCHA

Property Agent



CHRIS TAYLOR

Property Agent



OLIVER THOMPSON

Property Agent



A beagle dog is running towards the camera in a lush green field. Its ears are large and flapping out to the sides, and its eyes are wide open. The dog has a white chest and paws, with brown and black patches on its face and back. The background is a soft-focus landscape with green grass, small yellow and purple flowers, and a line of trees in the distance. A person's legs in blue jeans are visible in the upper left corner. A solid magenta horizontal bar is at the very top of the image.

*If you have any questions  
please feel free to Hound us!*



# Let's Talk



## EMAIL ADDRESS

[mail@oconnellpropertyagents.co.uk](mailto:mail@oconnellpropertyagents.co.uk)

**GLOUCESTER:** 01452 387 437

**TEWKESBURY:** 01684 367 000

**CHELTENHAM:** 01242 506 550

